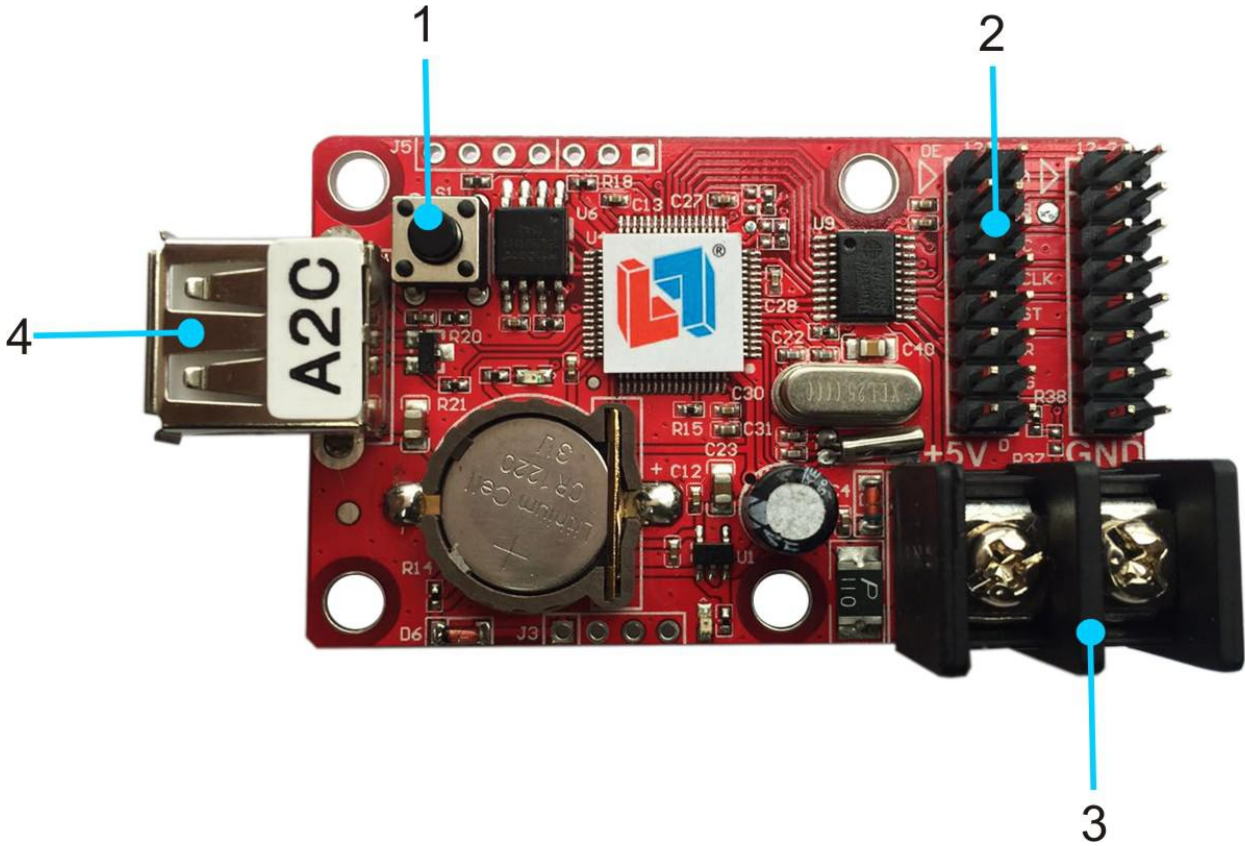


Specification for A2C LED Display Controllers

Version	Date	Reason
V2.00	2016/06/10	创建文档

Hardware:



Number	Interface Name	Description
1	Multifunction button	Can support : 1.Test LED panel 2.Restore factory settings
2	HUB12 Port	Connect HUB12 module
3	5V Power Port	Wide voltage input 3.5V-6V
4	USB Port	USB Port

Parameter:

Memory	2MByte
Adaptation	Single color , Double color
Range	Single:640*16 320*32 Double:320*16 160*32
Function	Multi area display/Multi language version
Program NO.	Support 128 program,Each program 16 zones
Area type	Text/Image/Animation/Time/Analog clock/Timer/Temperature
Frame mode	Program Water frame/Area Water frame
Clock	Digital clock/Analog clock/Countup/Countdown
Communication	USB port
Display Port	1*HUB08 2*HUB12
Sensor	Temperature Sensor
Brightness	16 Level brightness,Automatically adjust the period of time
Remote	Support Timing Switch/Software Switch
Voltage	3.5V~6V
Max Power	<1W
Temperature	-40℃-85℃
Secondary Development	DLL
Software	LED Player 6.0

Dimensional drawing:

